

# Westmount Estates



Farmcote Road, London, SE12 0JZ

**£2,200 PCM**

Westmount Estates are delighted to offer this newly renovated three-bedroom semi-detached family home, ideally located on the popular Farmcote Road, SE12.

Finished to a good standard throughout, the property offers bright and spacious accommodation perfectly suited to long-term tenants seeking a comfortable and well-presented home. The ground floor benefits from two generous reception rooms, providing versatile living and dining space ideal for both families and professional tenants alike.

To the first floor are three well-proportioned bedrooms and a modern bathroom. Externally, the property boasts a large private rear garden, offering an excellent outdoor space for relaxation and entertaining, along with off-street parking for one vehicle.

Conveniently situated within easy reach of local amenities, reputable schools and excellent transport links, this property is perfectly positioned.

Available for long-term rental, this beautifully refurbished home is ready for immediate occupation and early viewing is highly recommended.

## ENTRANCE

## ENTRANCE HALL

## FRONT ROOM



## BEDROOM ONE



## DINING ROOM



## BEDROOM TWO



## KITCHEN



## BEDROOM THREE



## STAIRS AND LANDING

**BATHROOM**

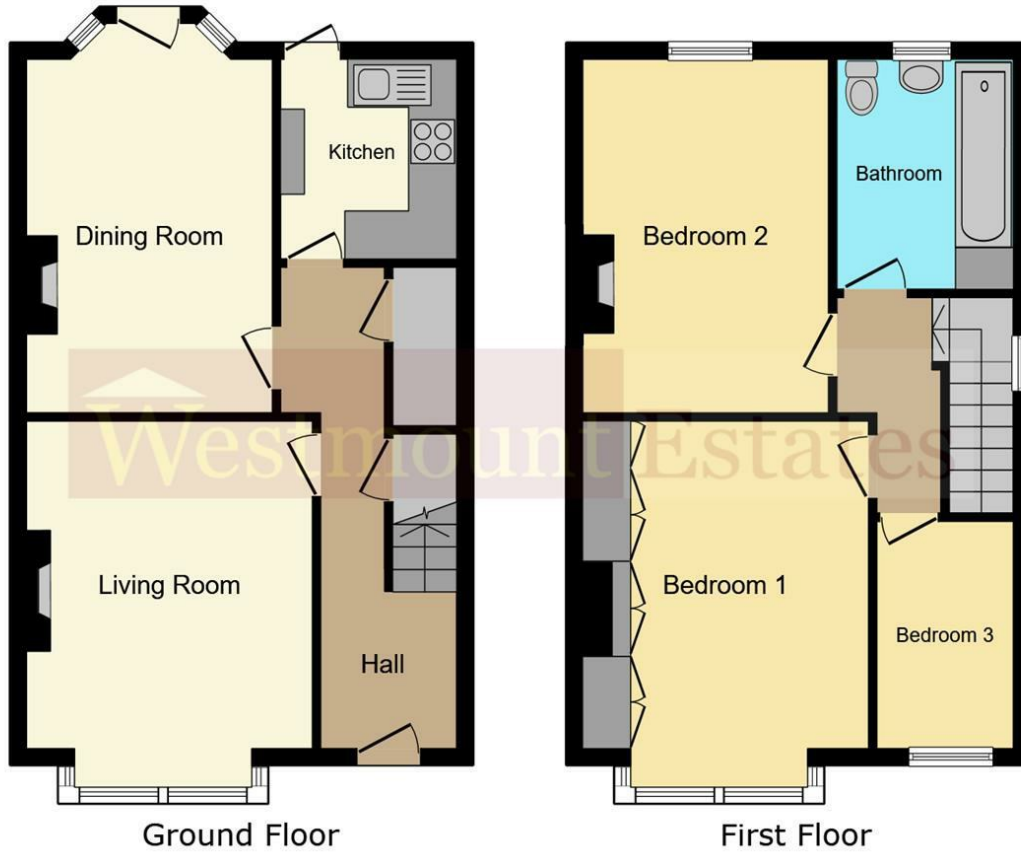


**REAR GARDEN**



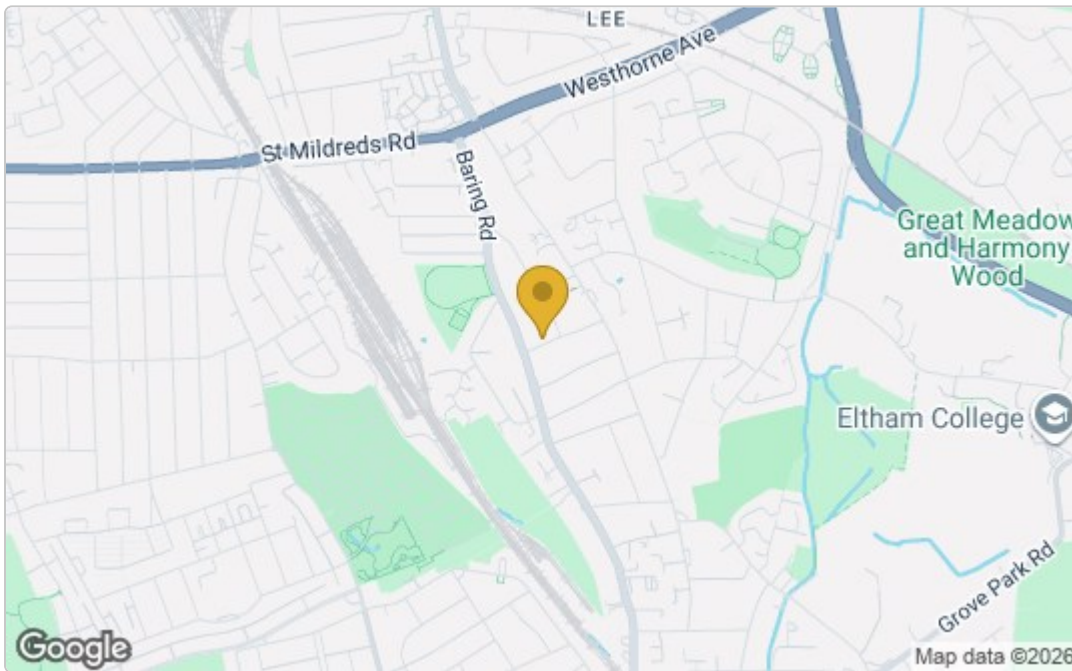
**DRIVEWAY**

# Floor Plan

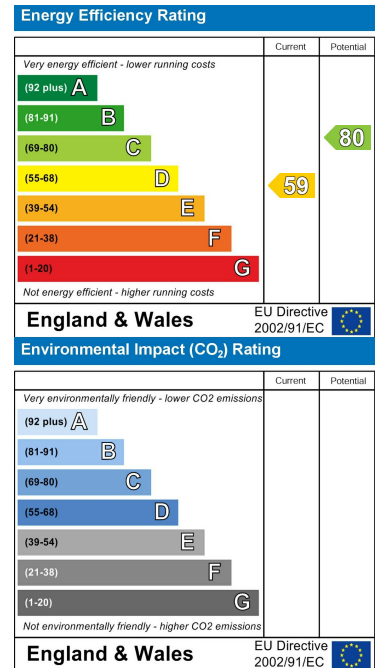


This floor plan is for illustrative purposes only. It is not drawn to scale. Any measurements, floor areas (including any total floor area), openings and orientations are approximate. No details are guaranteed, they cannot be relied upon for any purpose and do not form any part of any agreement. No liability is taken for any error, omission or misstatement. A party must rely upon its own inspection(s). Powered by www.Propertybox.io

## Area Map



## Energy Efficiency Graph



These particulars, whilst believed to be accurate are set out as a general outline only for guidance and do not constitute any part of an offer or contract. Intending purchasers should not rely on them as statements of representation of fact, but must satisfy themselves by inspection or otherwise as to their accuracy. No person in this firm's employment has the authority to make or give any representation or warranty in respect of the property.